

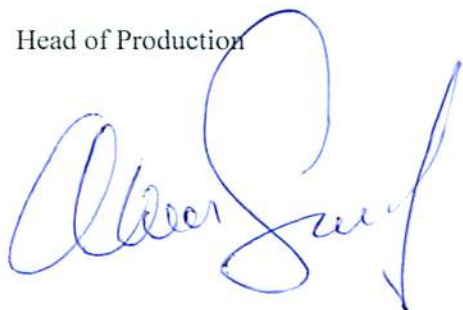
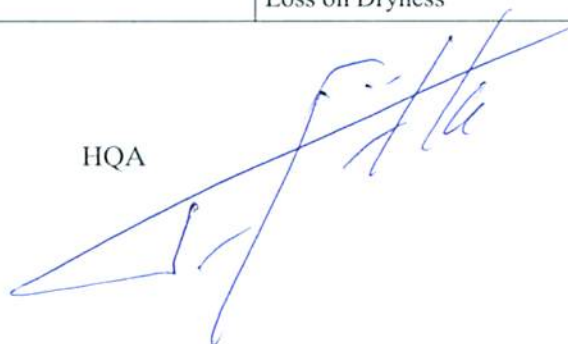
## CERTIFICATE OF ANALYSIS

GENERAL DATA			
Article Number	02.02.30		
Article description	<i>Dermatophagoides farinae</i> Mite Bodies		
Storage	-20 °C		
Production Date	December, 2014		
Charge Number	18M03		
RAW MATERIAL / PRODUCTION PROCES			
Cultivation location	Groningen, the Netherlands		
Cultivation method	The mites are cultivated separately at constant temperature and humidity		
Source of mites	Source described, identified, selected and purified by Citeq Biologics Source confirmed by external specialist		
Inoculation	The mites are grown in a continuous culture, i.e. a portion of a previous lot becomes the starting material for the next lot		
Medium	Main components not of human and animal origin (starch/yeast) Additives (< 0.1%) contain no human or animal components		
POST HARVEST PROCESSING OF MITES			
Harvesting of mite bodies	The mites have been sieved after cultivation After sieving, the mites are separated from the medium by physical separation methods		
Freeze drying	The mite bodies are subsequently killed and freeze dried		
ANALYSES			
	Result	Specifications	
Species	Ok	<i>Dermatophagoides farinae</i>	Literature
Character material	Ok	Brown woolly powder	Visual determination
Purity	> 99%	Other mite species < 1% Foreign material < 1%	Microscopic determination
Allergenic pattern (mg/g)	Der f 1	0.25	ELISA
	Der f 2	0.69	
	Der p 1	< 0.05	
Protein content (mg/g)	98	50-200	Bradford assay BCA assay
	148	100-400	
Protein pattern	Ok	Clear bands	SDS-PAGE gel; CBB & silver staining
Bioburden (Cfu/g)	SDA	192	Ph. Eur.
	TSA	4.2 x 10 <sup>4</sup>	
Water content (%)	6.3	< 8	Loss on Dryness

January 8, 2019

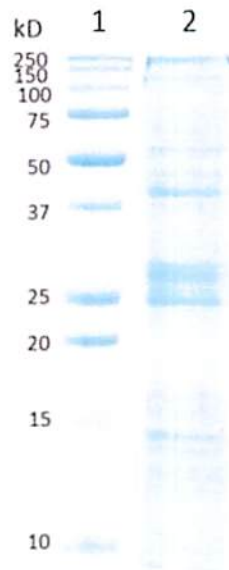
Head of Production

HQA

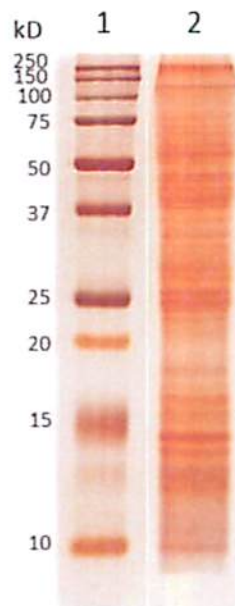



## SDS-PAGE analysis

### CBB Stain:



### Silver Stain:



1: Marker, 2: 18M03