

## CERTIFICATE OF ANALYSIS (For research use only)

GENERAL DATA	
Article Number	40.03.85
Article description	Birch ( <i>Betula pendula</i> ) pollen freeze dried
Storage	- 20 °C
Production Date	January 25, 2023
Charge Number	22L09

RAW MATERIAL / PRODUCTION PROCESS	
Cultivation location	Czech Republic
Cultivation method	Branches of trees were collected and put in a greenhouse until the inflorescences matured. After maturing the inflorescences were collected, sieved and extracted with acetone.
POST HARVEST PROCESSING OF POLLEN	
Extraction	The pollen have been extracted followed by filtration
Freeze-drying	The pollen have been freeze dried after dialysis

ANALYSES			
IDENTITY / PURITY			
Identity	Result	Specifications	Reference
Visual	Ok	Yellow powder	
(BIO)CHEMICAL ANALYSES			
Analysis	Result	Specifications	Method
Protein content (mg/g)	27 535	t.b.d.	Bradford method BCA method
Protein content	Pictures added (page 2)	t.b.d.	SDS-PAGE gel + CBB/silver staining

February 7, 2023

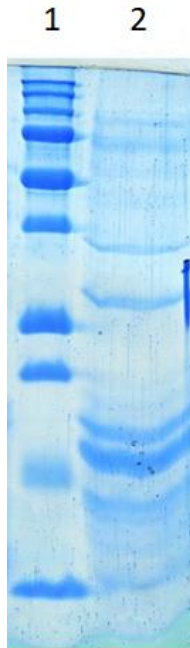


Head production

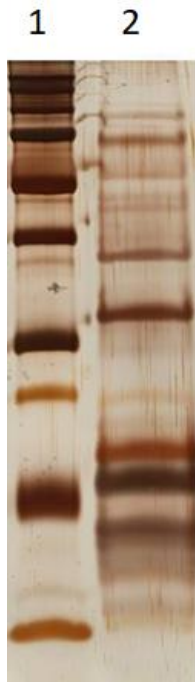
## CERTIFICATE OF ANALYSIS (For research use only)

SDS-PAGE analysis

CBB stain:



Silver stain:



1: Marker; 2: 22L09