

## CERTIFICATE OF ANALYSIS (For research use only)

| GENERAL DATA        |  |
|---------------------|--|
| Article Number      | 40.11.85   |
| Article description | Olive ( <i>Olea europaea</i> ) pollen freeze dried |
| Storage             | - 20 °C  |
| Production Date     | November 17, 2022                                  |
| Charge Number       | 22L06  |

| RAW MATERIAL / PRODUCTION PROCESS |   |
|-----------------------------------|---|
| Cultivation location              | Czech Republic  |
| Cultivation method                | Branches of trees were collected and put in a greenhouse until the inflorescences matured. After maturing the inflorescences were collected, sieved and extracted with acetone. |
| POST HARVEST PROCESSING OF POLLEN |   |
| Extraction                        | The pollen have been extracted followed by filtration   |
| Freeze-drying                     | The pollen have been freeze dried after dialysis  |

| ANALYSES               |                         |                |                                    |
|------------------------|-------------------------|----------------|------------------------------------|
| IDENTITY / PURITY      |                         |                |                                    |
| Identity               | Result                  | Specifications | Reference                          |
| Visual                 | Ok                      | Yellow powder  |                                    |
| (BIO)CHEMICAL ANALYSES |                         |                |                                    |
| Analysis               | Result                  | Specifications | Method                             |
| Protein content (mg/g) | 20                      | t.b.d.         | Bradford method                    |
|                        | 55                      |                | BCA method                         |
| Protein content        | Pictures added (page 2) | t.b.d.         | SDS-PAGE gel + CBB/silver staining |

February 7, 2023

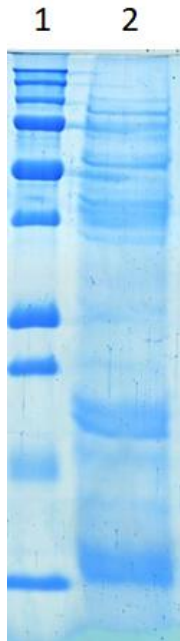


Head production

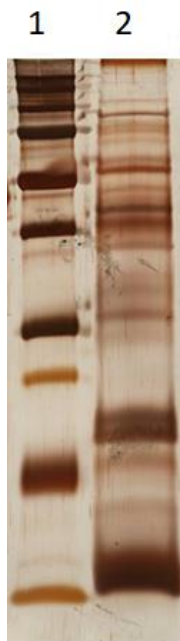
## CERTIFICATE OF ANALYSIS (For research use only)

SDS-PAGE analysis

CBB stain:



Silver stain:



1: Marker; 2: 22L06