

## CERTIFICATE OF ANALYSIS

**(For research use only)**

GENERAL DATA	
Article Number	40.19.85
Article description	Ragweed ( <i>Ambrosia elatior</i> ) pollen freeze dried
Storage	- 20 °C
Production Date	October 13, 2022
Charge Number	22K01

RAW MATERIAL / PRODUCTION PROCESS	
Cultivation location	Czech Republic
Cultivation method	Branches were collected and put in a greenhouse until the inflorescences matured. After maturing the inflorescences were collected, sieved and extracted with acetone.
POST HARVEST PROCESSING OF POLLEN	
Extraction	The pollen have been extracted followed by filtration
Freeze-drying	The pollen have been freeze dried after dialysis

ANALYSES			
IDENTITY / PURITY			
Identity	Result	Specifications	Reference
Visual	Ok	White to yellow powder	
(BIO)CHEMICAL ANALYSES			
Analysis	Result	Specifications	Method
Protein content (mg/g)	187 1.0 x 10 <sup>3</sup>	t.b.d.	Bradford method BCA method
Protein content	Pictures added (page 2)	t.b.d.	SDS-PAGE gel + CBB/silver staining

October 17, 2022

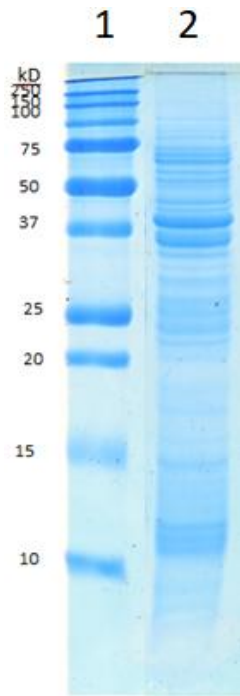


Head production

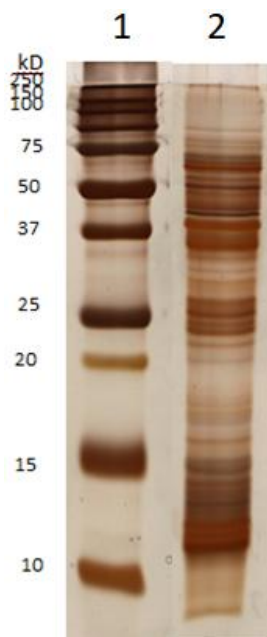
## CERTIFICATE OF ANALYSIS (For research use only)

SDS-PAGE analysis

CBB stain:



Silver stain:



1: Marker; 2: 22K01